

MUST-HAVE SUPPLIES

- Cash (ATMs may not work after the storm)
- Drinking Water (at least a 7-day supply; 1 gallon per person per day)
- Prescription Medicine (2-week supply)
- Two Ice Chests w/Ice (one for ice, one for food)
- Baby Supplies (diapers, wipes, baby food/formula)
- Manual Can Opener
- Flashlights / Lanterns
- Battery-operated Radio and Clock (TV if available)
- Spare Batteries (2 spare sets for each device)
- Toilet Paper and Hygiene Items
- First Aid Kit
- Bleach for Sterilization (unscented with Hypochlorite the only active ingredient)
- Iodine or Water Purification Tablets
- Disposable Plates, Glasses and Utensils
- Plastic Garbage Bags
- Disinfectant
- Soap, Hand Sanitizer and Dish Detergent
- Insect Repellent and Sunscreen
- Corded, Nonelectric Phone
- Camera and Film
- Books, Magazines, Toys
- Plastic Sheeting / Tarp
- Duct or Masking Tape
- Nails, Rope, Lumber, Tools
- Rain Gear
- Fire Extinguisher
- Fuel for Generators and Cars
- Propane Gas (for grills)
- Charcoal and Lighter Fluid
- Waterproof Matches
- NONPERISHABLE ITEMS**
- Canned Meat
- Canned Fruits and Vegetables
- Canned Soups and Chili
- Dried Foods
- Dried Fruits and Nuts
- Cereal
- Crackers and Cookies
- Coffee, Tea or Drink Boxes
- Peanut Butter and Jelly
- Pudding
- Powdered Milk
- Evaporated Milk or Parmalat Milk



GENERATOR SAFETY

- Before buying a generator, consider the following:
- What appliances will you run?
 - Do you need a portable or stationary generator?
 - Do you need multiple outlets or multiple types of outlets?
- Other tips to consider:
- Never run a generator indoors OR in your garage. Find a well-ventilated area away from your home.
 - Do not connect your generator directly to your home's wiring.
 - Always use heavy-duty, indoor/outdoor rated extension cords to connect to the generator.
 - Do not attempt to refuel your generator while it is running. Turn off all appliances connected to the generator, then turn off the generator. Let it cool before you attempt to refuel.
 - Read and follow the manufacturer's guidelines listed in your owner's manual for correct operating procedures and power output

capabilities. Don't try to run more appliances than your generator can handle.

- Check the oil every time you add gas.
- Plug appliances directly into the generator.
- Save gas by alternating appliances. For example, refrigerators can be kept cool by supplying power eight hours a day.
- Do not store fuel indoors. Gasoline (and other flammable liquids) should be stored outside of living areas in properly labeled, non-glass safety containers. They should not be stored in a garage if a fuel-burning appliance is in the garage. The gasoline vapors can travel invisibly along the ground and easily be ignited.
- Always have a fully charged, approved fire extinguisher located near the generator.

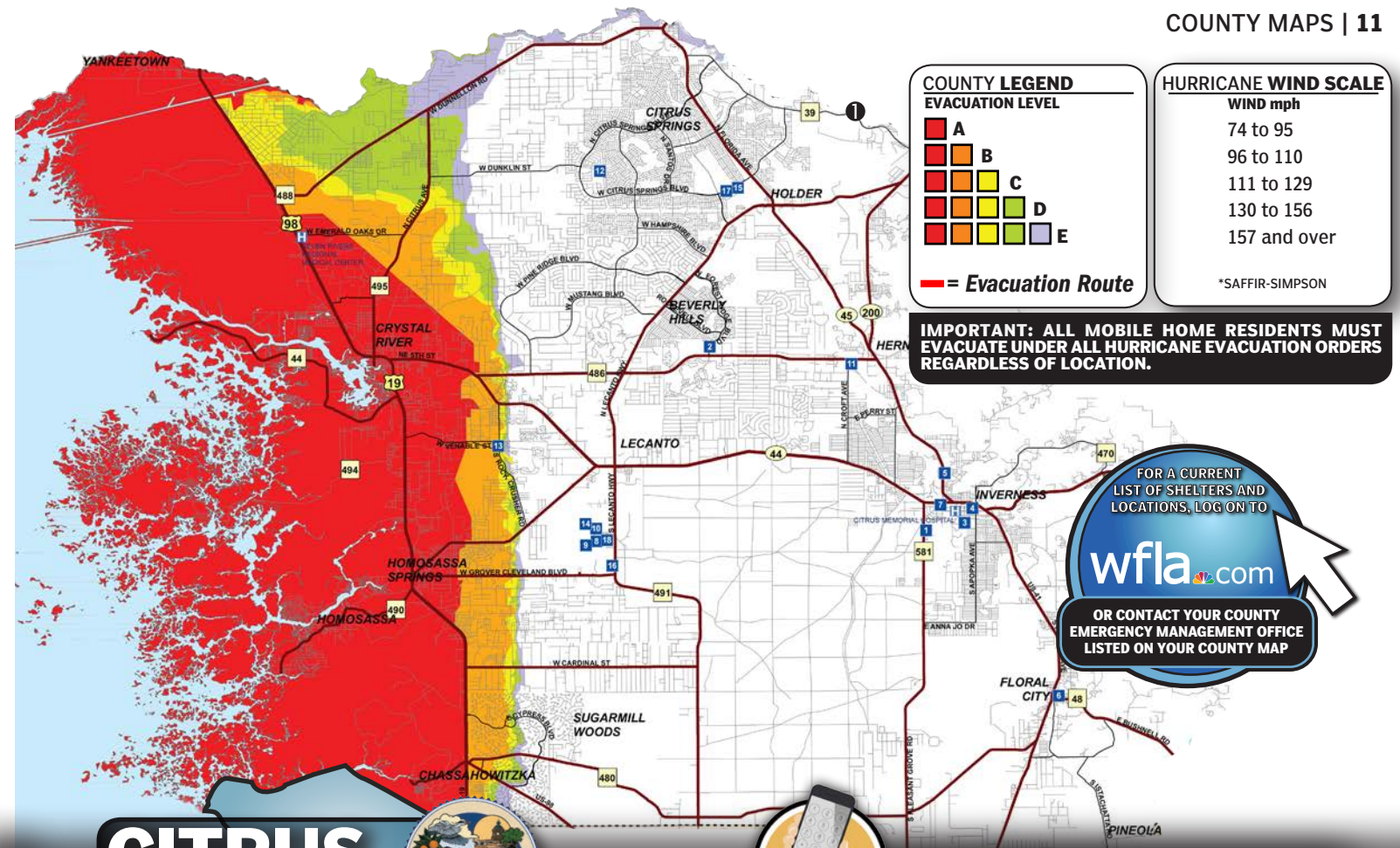


USING YOUR COUNTY MAP

1. Locate where you live and work on the map.
2. Determine whether you are in an evacuation area, and if so, what level (color).
3. If you are in an evacuation area, or mobile home/manufactured home/RV, decide where you will go if ordered to evacuate. Your choices include:
 - Home of a relative or friend outside the evacuation zone
 - Hotel/motel outside the evacuation zone (make arrangements early)
 - Leave the area entirely
 - As a last resort go to a public shelter
4. If you must go to a public shelter, use your county map to decide which one is convenient. Make sure you verify the shelter is open before you go. Many shelters are local schools. The abbreviations ES, MS, and HS (elementary school, middle school, and high school) are used on the shelter list.

HURRICANE THREAT

- The colored areas on the maps are vulnerable to storm surge. Storm surge is the saltwater flooding that rushes over coastal areas when the core of the hurricane crosses land.
- Storm surge causes a path of destruction wiping out structures in its path. This is a life-threatening situation for anyone who ignores evacuation orders and stays in vulnerable areas.
- Hurricanes are categorized on a scale of 1 to 5 depending on wind strength. The evacuation zones are color-coded to designate the level of storm surge likely to occur with the five categories.
- If you live in an area ordered to evacuate, gather your emergency supplies, secure your home and leave immediately. Failure to obey an evacuation order is a violation of Florida law.
- Note: All those in mobile homes/manufactured homes/RVs must evacuate for all evacuation orders, regardless of where you are located.



CITRUS COUNTY

WWW.SHERIFFCITRUS.ORG

CITRUS COUNTY SHELTER INFORMATION

1 PLEASANT GROVE ELEMENTARY SCHOOL	630 PLEASANT GROVE ROAD, INVERNESS
2 FOREST RIDGE ELEMENTARY SCHOOL	2927 NORTH FOREST RIDGE BLVD., HERNANDO
3 CITRUS HIGH SCHOOL	600 WEST HIGHLAND BLVD., INVERNESS
4 INVERNESS PRIMARY SCHOOL	206 SOUTH LINE AVE., INVERNESS
5 INVERNESS MIDDLE SCHOOL	1950 HIGHWAY 41 NORTH, INVERNESS
6 FLORAL CITY ELEMENTARY SCHOOL	8457 EAST MARVIN STREET, FLORAL CITY
7 WITHLACOOCHEE TECHNICAL INSTITUTE (RECEPTION CENTER)	1201 WEST MAIN STREET, INVERNESS
8 LECANTO PRIMARY SCHOOL	3790 WEST EDUCATIONAL PATH, LECANTO
9 LECANTO MIDDLE SCHOOL	3800 WEST EDUCATIONAL PATH, LECANTO
10 LECANTO HIGH SCHOOL	3810 WEST EDUCATIONAL PATH, LECANTO
11 HERNANDO ELEMENTARY SCHOOL	2975 NORTH CROFT AVENUE, HERNANDO
12 CITRUS SPRINGS ELEMENTARY SCHOOL	3570 WEST CENTURY BLVD., CITRUS SPRINGS
13 ROCK CRUSHER ELEMENTARY SCHOOL	814 SOUTH ROCK CRUSHER ROAD, HOMOSASSA
14 CREST SCHOOL	2600 SOUTH PANTHER PRIDE DRIVE, LECANTO
15 CITRUS SPRINGS MIDDLE SCHOOL	150 WEST CITRUS SPRINGS BLVD., CITRUS SPRINGS
16 CENTRAL FLORIDA COMMUNITY COLLEGE	3800 SOUTH LECANTO HIGHWAY, LECANTO
17 CENTRAL RIDGE ELEMENTARY SCHOOL	185 WEST CITRUS SPRINGS BLVD., CITRUS SPRINGS
18 RENAISSANCE CENTER	3630 WEST EDUCATIONAL PATH, LECANTO

NOT ALL SHELTERS MAY BE OPENED!

IMPORTANT PHONE NUMBERS

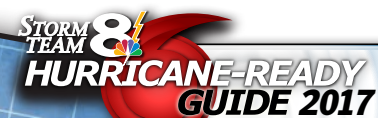
POLICE, FIRE, EMS EMERGENCIES	911
CITRUS COUNTY SHERIFF'S OFFICE	352-726-4488
EMERGENCY MANAGEMENT	352-746-6555
LECANTO GOVERNMENT BUILDING	352-527-5200
CITRUS COUNTY HEALTH DEPARTMENT	352-527-0068
CITRUS COUNTY PUBLIC WORKS	352-527-5477
CITRUS COUNTY ANIMAL SERVICES	352-726-7660
CITRUS COUNTY SOLID WASTE	352-527-7670
CITRUS COUNTY SCHOOL BOARD	352-726-1931
CITRUS COUNTY FLOOD MANAGEMENT COORDINATOR	Z Z Z
NATURE COAST VOLUNTEER CENTER	352-249-1275
CITY OF INVERNESS ADMINISTRATION	352-726-2611
CITY OF INVERNESS PUBLIC WORKS	352-726-2321
CITY OF CRYSTAL RIVER ADMINISTRATION	795-4216 X302
CITY OF CRYSTAL RIVER PUBLIC WORKS	795-4216 X313
FLORIDA HIGHWAY PATROL	866-369-4613
FLORIDA FISH & WILDLIFE CONSERVATION COMMISSION	888-404-3922
AMERICAN RED CROSS (CITRUS COUNTY CHAPTER)	352-564-8455
SALVATION ARMY (CITRUS COUNTY)	352-621-5532
DUKE ENERGY (TO REPORT OUTAGES)	800-228-8485
SUMTER ELECTRIC (TO REPORT OUTAGES)	800-732-6141
WITHLACOOCHEE ELECTRIC	352-795-4382
CITIZEN INFORMATION & RUMOR CONTROL LINES OPEN DURING EMERGENCIES	352-746-5470
FEMA	352-527-2106
	800-621-FEMA, 800-462-7585 (TTY)

HURRICANE DEFINITION: TROPICAL DEPRESSION

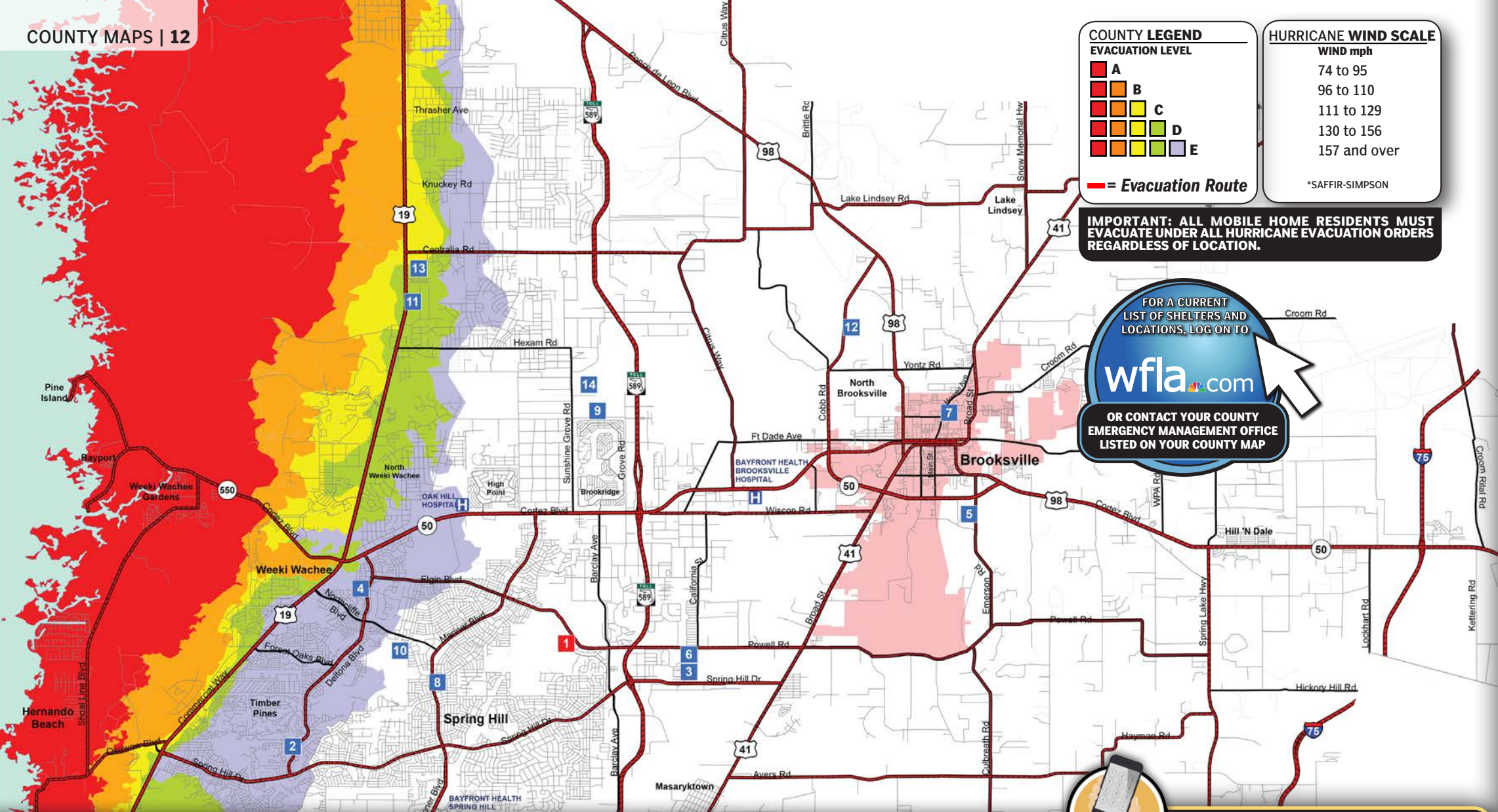
Tropical system with the maximum sustained surface wind of 33 knots (38 mph) or less. Tropical depressions can produce tremendous rainfall.

FOR MORE DETAILED INFORMATION AND INTERACTIVE MAPS LOG ON TO

wfla.com



ACCURACY. ANYTIME. ANYWHERE.



COUNTY LEGEND

EVACUATION LEVEL

- A
- B
- C
- D
- E

— = Evacuation Route

HURRICANE WIND SCALE

WIND mph

- 74 to 95
- 96 to 110
- 111 to 129
- 130 to 156
- 157 and over

*SAFFIR-SIMPSON

IMPORTANT: ALL MOBILE HOME RESIDENTS MUST EVACUATE UNDER ALL HURRICANE EVACUATION ORDERS REGARDLESS OF LOCATION.

FOR A CURRENT LIST OF SHELTERS AND LOCATIONS, LOG ON TO

wfla.com

OR CONTACT YOUR COUNTY EMERGENCY MANAGEMENT OFFICE LISTED ON YOUR COUNTY MAP

DESOTO COUNTY

WWW.DESOTOBOCC.COM/DEPARTMENTS/EMERGENCY_MANAGEMENT

- DESOTO COUNTY SPECIAL NEEDS SHELTER**
- SOUTH FLORIDA STATE COLLEGE** 2251 NE TURNER AVENUE, ARCADIA
 - APPLICANTS MUST REGISTER TO USE THIS SHELTER.
 - DESOTO COUNTY PUBLIC SHELTER**
 - DESOTO MIDDLE SCHOOL** 420 EAST GIBSON STREET, ARCADIA

- ANIMAL SERVICES** 863-993-4855
- EMERGENCY MANAGEMENT** 863-993-4831
- FLORIDA POWER AND LIGHT** 1-800-468-8243
- HIGHWAY PATROL** 239-938-1800
- PEACE RIVER ELECTRIC** 1-800-282-3824
- AMERICAN RED CROSS** 863-494-2348
- SHERIFF** 863-993-4700

HARDEE COUNTY

WWW.HARDEECOUNTY.NET/EOC

HARDEE COUNTY SHELTER INFORMATION

- PRIMARY SHELTERS**
- ZOLFO SPRINGS ES** 3215 SCHOOLHOUSE RD, ZOLFO SPRINGS
 - BOWLING GREEN ES** 4530 CHURCH AVE, BOWLING GREEN
 - NORTH WAUCHULA ES** 1120 NORTH FLORIDA AVE, WAUCHULA
 - HILLTOP ES** 2401 US HIGHWAY 17 N, WAUCHULA
 - HARDEE JHS (PET FRIENDLY)** 200 SOUTH FLORIDA AVE., HARDEE
- SPECIAL NEEDS SHELTER (REQUIRES PRE-REGISTRATION)**
- SOUTH FLORIDA CC, HARDEE CAMPUS** 2968 US HIGHWAY 17 N, BOWLING GREEN

- ANIMAL CONTROL** 863-773-2320
- EMERGENCY MANAGEMENT** 863-773-6373
- FIRE RESCUE** 863-773-4362
- HIGHWAY PATROL** 239-938-1800
- PEACE RIVER ELECTRIC** 1-800-282-3824
- DUKE ENERGY** 1-800-228-8485
- SHERIFF** 863-773-4144
- SOLID WASTE** 863-773-5089

HERNANDO COUNTY

WWW.HERNANDOSHERIFF.ORG/EM

*** FOR CURRENT EMERGENCY INFORMATION AND LIVE EOC UPDATES TUNE TO HERNANDO COUNTY GOVERNMENT BROADCAST CABLE CHANNEL 622 OR WEB STREAMED AT WWW.HERNANDOCOUNTY.US.**

HERNANDO COUNTY SHELTER INFORMATION

- 1 CHALLENGER K-8 SCHOOL (SPECIAL NEEDS SHELTER)** 13400 ELGIN BLVD., SPRING HILL, 34609
- 2 DELTONA ELEMENTARY** 2055 DELTONA BLVD., SPRING HILL, 34606
- 3 NATURE COAST TECHNICAL HIGH SCHOOL** 4057 CALIFORNIA ST., BROOKSVILLE, 34604
- 4 FOX CHAPEL MIDDLE SCHOOL** 9412 FOX CHAPEL LANE, SPRING HILL, 34606
- 5 MOTON ELEMENTARY** 7175 EMERSON ROAD, BROOKSVILLE, 34601
- 6 CHOCACHATTI ELEMENTARY** 4135 CALIFORNIA ST., BROOKSVILLE, 34604
- 7 HERNANDO HIGH SCHOOL** 700 BELL AVE., BROOKSVILLE, 34601
- 8 SPRINGSTEAD HIGH SCHOOL** 3300 MARINER BLVD., SPRING HILL, 34609
- 9 WEST HERNANDO MIDDLE SCHOOL** 14325 KEN AUSTIN PARKWAY, BROOKSVILLE, 34613
- 10 EXPLORER K-8 SCHOOL** 10252 NORTHCLIFFE BLVD., SPRING HILL, 34608
- 11 WEEKI WACHEE HIGH SCHOOL** 12150 VESPA WAY, WEEKI WACHEE, 34614
- 12 D.S. PARROTT MIDDLE SCHOOL** 19220 YOUTH DRIVE, BROOKSVILLE, 34601
- 13 WINDING WATERS K-8** 12240 VESPAR WAY, WEEKI WACHEE, 34614
- 14 CENTRAL HIGH SCHOOL** 14075 KEN AUSTIN PARKWAY, BROOKSVILLE, 34613

PET FRIENDLY ●

WWW.HERNANDOSHERIFF.ORG/EM

IMPORTANT PHONE NUMBERS

- ANIMAL SERVICES** 352-796-5062
- BROOKSVILLE POLICE** 352-540-3800
- EMERGENCY MANAGEMENT** 352-754-4083
- EOC RECORDED INFORMATION LINE** 352-754-4111
- FLORIDA HIGHWAY PATROL** 352-754-6767
- DUKE ENERGY** 800-228-8485
- PUBLIC INFORMATION CENTER** 352-754-4083
- HERNANDO COUNTY SHERIFF** 352-754-6830
- HERNANDO COUNTY FIRE RESCUE** 352-540-4353
- BROOKSVILLE FIRE DEPARTMENT** 352-540-3840
- SOLID WASTE** 352-754-4037
- WITHLACOCHEE RIVER ELECTRIC COOPERATIVE** 352-596-4000
- AMERICAN RED CROSS** 352-564-8455
- CATHOLIC CHARITIES** 352-686-9897
- SALVATION ARMY** 352-796-1186
- UNITED WAY** 352-688-2026
- TAMPA BAY CARES, INC** 2-1-1
- S.A.M.E. CODE (SPECIFIC AREA MESSAGE ENCODER)** FIPS CODE 012053
- WWW.HERNANDOSHERIFF.ORG/EM** 9-1-1
- EMERGENCY DIAL** 9-1-1

HIGHLANDS COUNTY

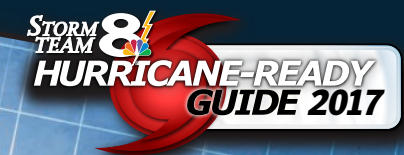
WWW.HCBCC.NET

- ANIMAL CONTROL** 863-655-6475
- EMERGENCY MANAGEMENT** 863-385-1112
- GLADES ELECTRICAL** 1-800-226-4025
- HIGHWAY PATROL** 239-938-1800
- DUKE ENERGY** 1-800-228-8485
- SHERIFF** 863-402-7200

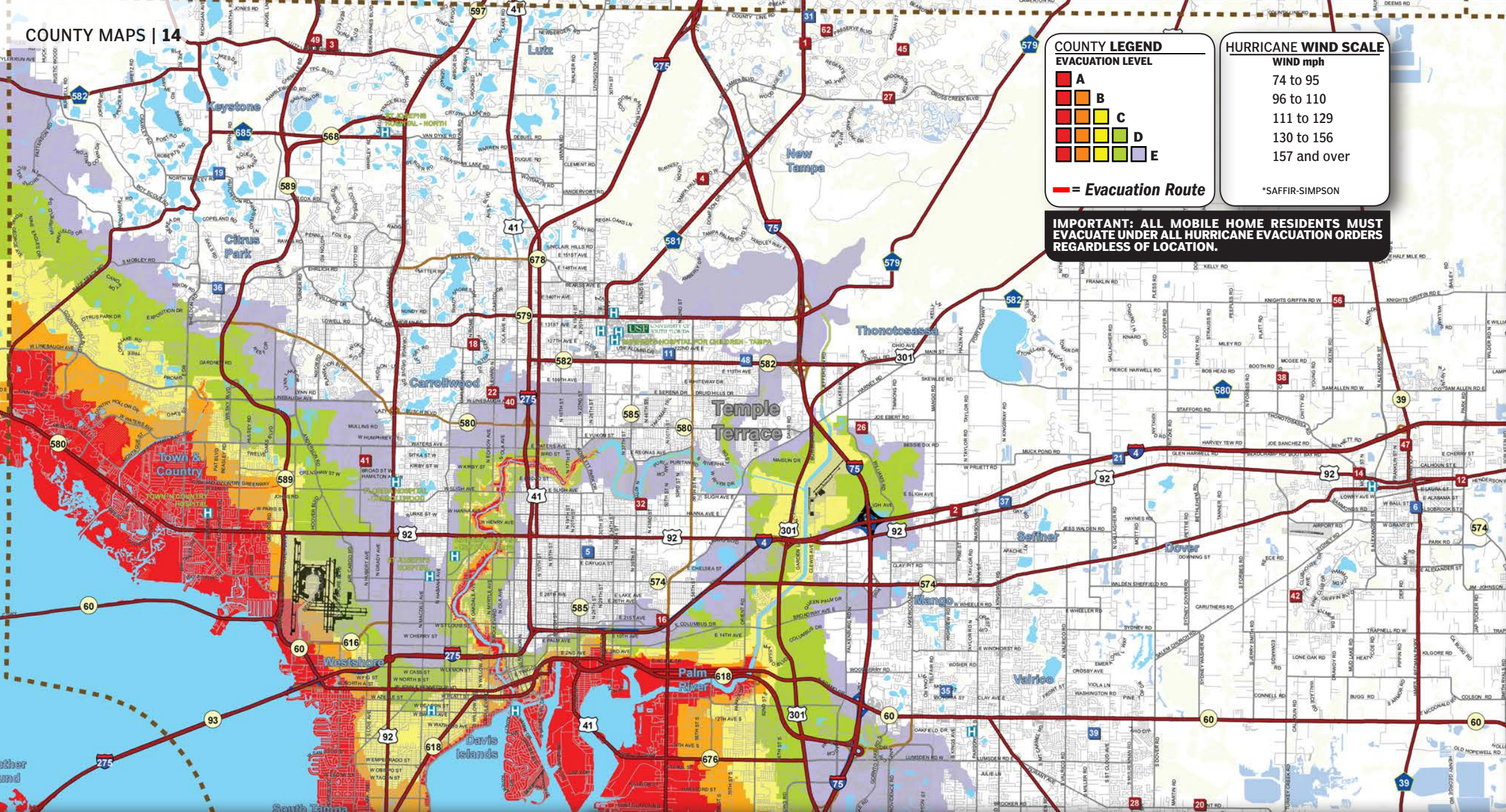
CONTACT EMERGENCY MANAGEMENT FOR SHELTER INFORMATION.

HURRICANE DEFINITION: HURRICANE WARNING Warning that hurricane conditions are expected within 24 hours or less. This is the time to prepare yourself for severe weather. High winds and coastal flooding will develop many hours before the eye of the storm actually comes ashore.

FOR MORE DETAILED INFORMATION AND INTERACTIVE MAPS LOG ON TO **wfla.com**



ACCURACY. ANYTIME. ANYWHERE.



COUNTY LEGEND

EVACUATION LEVEL

- A
- B
- C
- D
- E

— = Evacuation Route

HURRICANE WIND SCALE

WIND mph

- 74 to 95
- 96 to 110
- 111 to 129
- 130 to 156
- 157 and over

*SAFFIR-SIMPSON

IMPORTANT: ALL MOBILE HOME RESIDENTS MUST EVACUATE UNDER ALL HURRICANE EVACUATION ORDERS REGARDLESS OF LOCATION.

HILLSBOROUGH COUNTY SHELTER INFORMATION

PUBLIC SHELTERS OPENING FOR LOWER INTENSITY STORMS

- 5 MIDDLETON HIGH SCHOOL
- 6 SIMMONS CENTER
- 9 SHIELDS MIDDLE SCHOOL
- 11 PIZZO ELEMENTARY SCHOOL
- 15 CYPRESS CREEK ELEMENTARY SCHOOL
- 19 HAMMOND ELEMENTARY SCHOOL
- 21 STRAWBERRY CREST HIGH SCHOOL
- 24 SESSUMS ELEMENTARY SCHOOL
- 31 BARTELS MIDDLE SCHOOL
- 35 BRANDON HIGH SCHOOL
- 36 SMITH MIDDLE SCHOOL
- 37 BURNETT MIDDLE SCHOOL
- 39 VALRICO ELEMENTARY SCHOOL
- 44 SUMMERFIELD ELEMENTARY SCHOOL
- 48 GRECO MIDDLE SCHOOL
- 4801 N. 22ND ST., TAMPA
- 1202 GRANT ST., PLANT CITY
- 15732 BETH SHIELDS WAY, RUSKIN
- 11701 BULL RUN DR., TAMPA
- 4040 19TH AVE., RUSKIN
- 8008 N. MOBLEY RD., ODESSA
- 4691 GALLAGHER RD., DOVER
- 11525 RAMBLE CREEK DR., RIVERVIEW
- 9020 IMPERIAL OAK BLVD., TAMPA
- 1101 VICTORIA ST., BRANDON
- 14303 CITRUS POINTE DR., CITRUS PARK
- 1010 N. KINGSWAY RD., SEFFNER
- 609 S. MILLER RD., VALRICO
- 11990 BIG BEND ROAD, RIVERVIEW
- 6925 E. FOWLER AVE., TEMPLE TERRACE

ADDITIONAL PUBLIC SHELTERS OPENING FOR HIGHER INTENSITY STORMS

- 1 WHARTON HIGH SCHOOL
- 2 ARMWOOD HIGH SCHOOL
- 3 MCKITRICK ELEMENTARY SCHOOL
- 4 CHILES ELEMENTARY SCHOOL
- 7 CIMINO ELEMENTARY SCHOOL
- 10 BLOOMINGDALE HIGH SCHOOL
- 12 MARSHALL MIDDLE SCHOOL
- 13 REDDICK ELEMENTARY SCHOOL
- 14 TOMLIN MIDDLE SCHOOL
- 16 MCLANE MIDDLE SCHOOL
- 18 LAKE MAGDALENE ELEMENTARY SCHOOL
- 20 NELSON ELEMENTARY SCHOOL
- 22 CARROLWOOD ELEMENTARY SCHOOL
- 26 NEWSOME HIGH SCHOOL
- 27 BENITO MIDDLE SCHOOL
- 28 MULRENNAN MIDDLE SCHOOL
- 30 BARRINGTON MIDDLE SCHOOL
- 32 SHEEHY ELEMENTARY SCHOOL
- 33 COLLINS ELEMENTARY SCHOOL
- 34 SUMMERFIELD CROSSINGS ES
- 38 CORK ELEMENTARY SCHOOL
- 40 LOCKHART ELEMENTARY SCHOOL
- 41 CANELLA ELEMENTARY SCHOOL
- 42 TURKEY CREEK MIDDLE SCHOOL
- 43 BEVE ELEMENTARY SCHOOL
- 45 PRIDE ELEMENTARY SCHOOL
- 46 STOWERS ELEMENTARY SCHOOL
- 47 WILSON ELEMENTARY SCHOOL
- 49 STEINBRENNER HIGH SCHOOL
- 56 KNIGHTS ELEMENTARY SCHOOL
- 62 HERITAGE ELEMENTARY SCHOOL
- 20150 BRUCE B. DOWNS BLVD., TAMPA
- 12000 U.S. HWY. 92, SEFFNER, TAMPA
- 5503 LUTZ LAKE FERN RD., LUTZ
- 16541 W. TAMPA PALMS BLVD., TAMPA
- 4329 CULBREATH RD., VALRICO
- 1700 E. BLOOMINGDALE AVE., VALRICO
- 18 S. MARYLAND AVE., PLANT CITY
- 325 WEST LAE DR., WIMAUMA
- 501 N. WOODROW WILSON ST., PLANT CITY
- 2306 N. KNIGHTS AVE., BRANDON
- 2002 PINE LAKE DR., TAMPA
- 5413 DURANT RD., DOVER
- 3516 MCFARLAND RD., TAMPA
- 16550 FISH HAWK BLVD., LITHIA
- 4215 DURANT RD., VALRICO
- 5925 VILLAGE CENTER DR., LITHIA
- 6402 N. 40TH ST., TAMPA
- 12424 SUMMERFIELD BLVD., RIVERVIEW
- 11050 FAIRWAY MEADOWS DR., RIVERVIEW
- 3501 N. CORK RD., PLANT CITY
- 3719 N. 17TH ST., TAMPA
- 10707 NIXON RD., TAMPA
- 5000 S. TURKEY CREEK RD., PLANT CITY
- 5720 OSPREY RIDGE BLVD., LITHIA
- 10310 LIONS DEN DR., TAMPA
- 13915 BARRINGTON STOWERS DR., LITHIA
- 702 ENGLISH ST., PLANT CITY
- 5575 LUTZ LAKE FERN RD., LUTZ
- 4815 N. KEENE RD., PLANT CITY
- 10900 CROSS CREEK BLVD., TAMPA

NORTH HILLSBOROUGH COUNTY

HILLSBOROUGHCOUNTY.ORG/EMERGENCY

IMPORTANT PHONE NUMBERS

- ANIMAL SERVICES 813-774-5660
- BUILDING DEPARTMENT 813-272-5600
- EMERGENCY MANAGEMENT 813-272-6900
- HIGHWAY PATROL 813-558-1800
- HILLSBOROUGH COUNTY INFO LINE 813-272-5900
- TTY 813-301-7173
- SOLID WASTE 813-272-5680
- SHERIFF 813-247-8000
- SPECIAL NEEDS SHELTER 813-307-8063
- REGISTRATION 813-272-5900
- TECO 813-223-0800
- REPORT POWER OUTAGES 813-588-1010
- TRANSPORTATION INFO 813-272-5900
- AMERICAN RED CROSS 813-348-4820
- CATHOLIC CHARITIES 813-631-4370
- SALVATION ARMY 813-226-0055
- CRISIS CENTER OF TAMPA BAY 2-1-1

TRANSPORTATION INFO

DURING A HURRICANE EVACUATION, area buses run evacuation routes throughout the county to assist those who need transportation to shelters.

Greater Tampa and Town n' County: Hillsborough Area Regional Transit Authority runs special evacuation routes in these areas. For route maps and instructions, visit www.hartline.org or call the HARTinfo Line at 813-254-4278. This information is also available on the County Emergency Management website, www.hillsboroughcounty.org/emergency or by calling the Hillsborough InfoLine at 813-272-5900.

South and East Hillsborough County: Hillsborough County School District buses run evacuations routes in these areas. Route information is available at www.hillsboroughcounty.org/emergency or via the Hillsborough InfoLine at 813-272-5900.

HURRICANE DEFINITION: HURRICANE
Tropical system with maximum sustained surface wind of 64 knots (74 mph) or greater. A hurricane is the worst and the strongest of all tropical systems.

FOR A CURRENT LIST OF SHELTERS AND LOCATIONS, LOG ON TO

wfla.com

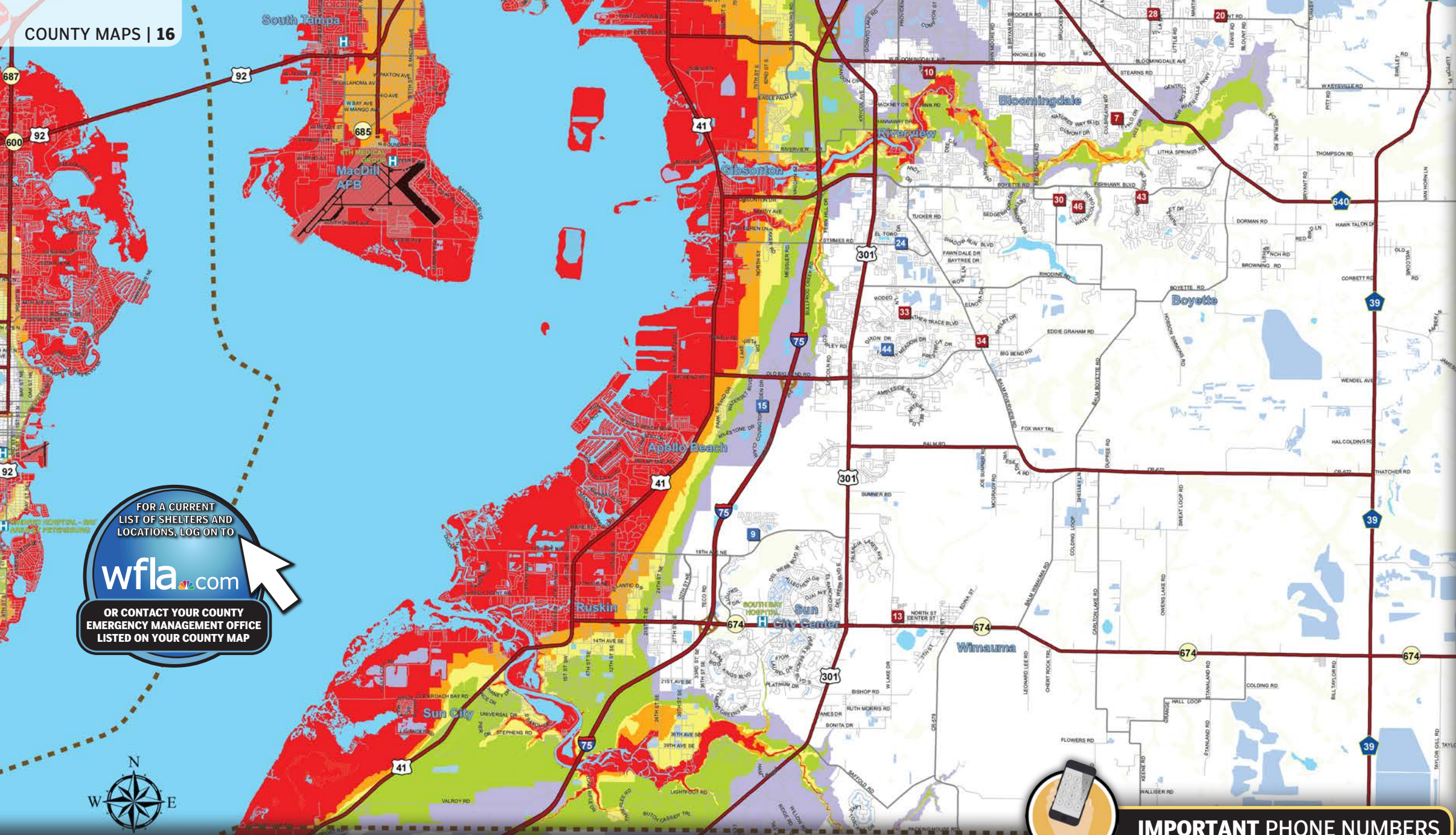
OR CONTACT YOUR COUNTY EMERGENCY MANAGEMENT OFFICE LISTED ON YOUR COUNTY MAP



ACCURACY. ANYTIME. ANYWHERE.

- OPEN FOR LOWER INTENSITY STORMS
- OPEN FOR HIGHER INTENSITY STORMS
- PET FRIENDLY

FOR MORE DETAILED INFORMATION AND INTERACTIVE MAPS LOG ON TO **wfla.com**



FOR A CURRENT LIST OF SHELTERS AND LOCATIONS, LOG ON TO wfla.com

OR CONTACT YOUR COUNTY EMERGENCY MANAGEMENT OFFICE LISTED ON YOUR COUNTY MAP

HILLSBOROUGH COUNTY SHELTER INFORMATION

PUBLIC SHELTERS OPENING FOR LOWER INTENSITY STORMS

- 5 MIDDLETON HIGH SCHOOL
- 6 SIMMONS CENTER
- 9 SHIELDS MIDDLE SCHOOL ●
- 11 PIZZO ELEMENTARY SCHOOL
- 15 CYPRESS CREEK ELEMENTARY SCHOOL
- 19 HAMMOND ELEMENTARY SCHOOL
- 21 STRAWBERRY CREST HIGH SCHOOL
- 24 SESSUMS ELEMENTARY SCHOOL
- 31 BARTELS MIDDLE SCHOOL
- 35 BRANDON HIGH SCHOOL ●
- 36 SMITH MIDDLE SCHOOL
- 37 BURNETT MIDDLE SCHOOL
- 39 VALRICO ELEMENTARY SCHOOL
- 44 SUMMERFIELD ELEMENTARY SCHOOL
- 48 GRECO MIDDLE SCHOOL ●
- 4801 N. 22ND ST., TAMPA
- 1202 GRANT ST., PLANT CITY
- 15732 BETH SHIELDS WAY, RUSKIN
- 11701 BULL RUN DR., TAMPA
- 4040 19TH AVE., RUSKIN
- 8008 N. MOBLEY RD., ODESSA
- 4691 GALLAGHER RD., DOVER
- 11525 RAMBLE CREEK DR., RIVERVIEW
- 9020 IMPERIAL OAK BLVD., TAMPA
- 1101 VICTORIA ST., BRANDON
- 14303 CITRUS POINTE DR., CITRUS PARK
- 1010 N. KINGSWAY RD., SEFFNER
- 609 S. MILLER RD., VALRICO
- 11990 BIG BEND ROAD, RIVERVIEW
- 6925 E. FOWLER AVE., TEMPLE TERRACE

ADDITIONAL PUBLIC SHELTERS OPENING FOR HIGHER INTENSITY STORMS

- 1 WHARTON HIGH SCHOOL
- 2 ARMWOOD HIGH SCHOOL
- 3 MCKITTRICK ELEMENTARY SCHOOL
- 4 CHILES ELEMENTARY SCHOOL
- 7 CIMINO ELEMENTARY SCHOOL
- 10 BLOOMINGDALE HIGH SCHOOL
- 12 MARSHALL MIDDLE SCHOOL
- 13 REDDICK ELEMENTARY SCHOOL
- 14 TOMLIN MIDDLE SCHOOL
- 16 MCLANE MIDDLE SCHOOL
- 18 LAKE MAGDALENE ELEMENTARY SCHOOL
- 20 NELSON ELEMENTARY SCHOOL
- 22 CARROLWOOD ELEMENTARY SCHOOL
- 26 NEWSOME HIGH SCHOOL
- 27 BENITO MIDDLE SCHOOL
- 28 MULRENNAN MIDDLE SCHOOL
- 30 BARRINGTON MIDDLE SCHOOL
- 32 SHEEHY ELEMENTARY SCHOOL
- 33 COLLINS ELEMENTARY SCHOOL
- 34 SUMMERFIELD CROSSINGS ES
- 38 CORK ELEMENTARY SCHOOL
- 40 LOCKHART ELEMENTARY SCHOOL
- 41 CANELLA ELEMENTARY SCHOOL
- 42 TURKEY CREEK MIDDLE SCHOOL
- 43 BEVIS ELEMENTARY SCHOOL
- 45 PRIDE ELEMENTARY SCHOOL
- 46 STOWERS ELEMENTARY SCHOOL
- 47 WILSON ELEMENTARY SCHOOL
- 49 STEINBRENNER HIGH SCHOOL
- 56 KNIGHTS ELEMENTARY SCHOOL
- 62 HERITAGE ELEMENTARY SCHOOL
- 20150 BRUCE B. DOWNS BLVD., TAMPA
- 12000 U.S. HWY. 92, SEFFNER, TAMPA
- 5503 LUTZ LAKE FERN RD., LUTZ
- 16541 W. TAMPA PALMS BLVD., TAMPA
- 4329 CULBREATH RD., VALRICO
- 1700 E. BLOOMINGDALE AVE., VALRICO
- 18 S. MARYLAND AVE., PLANT CITY
- 325 WEST LAE DR., WIMAUMA
- 501 N. WOODROW WILSON ST., PLANT CITY
- 2306 N. KNIGHTS AVE., BRANDON
- 2002 PINE LAKE DR., TAMPA
- 5413 DURANT RD., DOVER
- 3516 MCFARLAND RD., TAMPA
- 16550 FISH HAWK BLVD., LITHIA
- 10101 N. CROSS CREEK BLVD., TAMPA
- 4215 DURANT RD., VALRICO
- 5925 VILLAGE CENTER DR., LITHIA
- 6402 N. 40TH ST., TAMPA
- 12424 SUMMERFIELD BLVD., RIVERVIEW
- 11050 FAIRWAY MEADOWS DR., RIVERVIEW
- 3501 N. CORK RD., PLANT CITY
- 3719 N. 17TH ST., TAMPA
- 10707 NIXON RD., TAMPA
- 5000 S. TURKEY CREEK RD., PLANT CITY
- 5720 OSPREY RIDGE BLVD., LITHIA
- 10310 LIONS DEN DR., TAMPA
- 13915 BARRINGTON STOWERS DR., LITHIA
- 702 ENGLISH ST., PLANT CITY
- 5575 LUTZ LAKE FERN RD., LUTZ
- 4815 N. KEENE RD., PLANT CITY
- 10900 CROSS CREEK BLVD., TAMPA

IMPORTANT PHONE NUMBERS

- ANIMAL SERVICES 813-774-5660
- BUILDING DEPARTMENT 813-272-5600
- EMERGENCY MANAGEMENT 813-272-6900
- HIGHWAY PATROL 813-558-1800
- HILLSBOROUGH COUNTY INFO LINE 813-272-5900
- TTY 813-301-7173
- SOLID WASTE 813-272-5680
- SHERIFF 813-247-8000
- SPECIAL NEEDS SHELTER 813-307-8063
- REGISTRATION 813-272-5900
- TECO 813-223-0800
- REPORT POWER OUTAGES 813-588-1010
- TRANSPORTATION INFO 813-272-5900
- AMERICAN RED CROSS 813-348-4820
- CATHOLIC CHARITIES 813-631-4370
- SALVATION ARMY 813-226-0055
- CRISIS CENTER OF TAMPA BAY 2-1-1

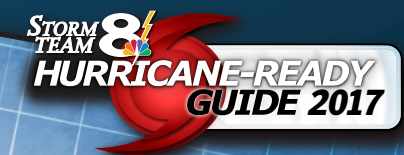
SOUTH HILLSBOROUGH COUNTY

HILLSBOROUGHCOUNTY.ORG/EMERGENCY

COUNTY LEGEND		HURRICANE WIND SCALE	
EVACUATION LEVEL		WIND mph	
■ A	■ B	74 to 95	
■ C	■ D	96 to 110	
■ E	■ E	111 to 129	
		130 to 156	
		157 and over	
— = Evacuation Route		*SAFFIR-SIMPSON	

IMPORTANT: ALL MOBILE HOME RESIDENTS MUST EVACUATE UNDER ALL HURRICANE EVACUATION ORDERS REGARDLESS OF LOCATION.

HURRICANE DEFINITION: HURRICANE EYE
 The calm center of the storm. In this area, winds are light and the sky is partly covered by clouds. The period of calm may only last 10-20 minutes before the severe weather returns.



ACCURACY. ANYTIME. ANYWHERE.

FOR MORE DETAILED INFORMATION AND INTERACTIVE MAPS LOG ON TO wfla.com

MANATEE COUNTY



WWW.MYMANATEE.ORG /EMERGENCY

IMPORTANT PHONE NUMBERS

- ANIMAL SERVICES** 941-742-5933
- EMERGENCY MANAGEMENT** 941-749-3500
- SPECIAL NEEDS REGISTRY** 941-749-3500 EXT. 7828
- FLORIDA POWER AND LIGHT** 800-468-8243
- HIGHWAY PATROL** 941-751-7647
- PEACE RIVER ELECTRIC** 800-282-3824
- SHERIFF** 941-747-3011
- SOLID WASTE** 941-792-8811
- AMERICAN RED CROSS** 941-792-8686
- CATHOLIC CHARITIES** 941-714-7829
- SALVATION ARMY** 941-748-5110
- UNITED WAY** 941-748-1313
- 211 REFERRAL LINE** 2-2-1
- MANATEE COUNTY GOV.** 941-748-4501
- NOAA WEATHER RADIO** FIPS CODE 012081
- FM RADIO STATION, WHPT** 102.5
- FM RADIO STATION, WCTQ** 106.5
- EMERGENCY ALERT SYSTEM (EAS)** WMTX 100.7
- TDD** 941-742-5802

MANATEE COUNTY SHELTER INFORMATION

- 18 BAYSHORE ELEMENTARY SCHOOL 6120 26TH ST. W, BRADENTON
- 13 BRADEN RIVER MIDDLE SCHOOL 6215 RIVER CLUB BLVD., BRADENTON
- 19 BRADEN RIVER HIGH 6545 SR 70 E, BRADENTON
- 24 BUFFALO CREEK MIDDLE SCHOOL 7320 69TH ST. E, PALMETTO
- 28 DAUGHTREY ELEMENTARY 515 63RD AVE E, BRADENTON
- 2 FREEDOM ELEMENTARY SCHOOL 9515 STATE ROAD 64 E, BRADENTON
- 25 GULLETT ELEMENTARY SCHOOL 12125 44TH AVE. E, BRADENTON
- 11 HAILE MIDDLE SCHOOL 9501 STATE RD. 64 E, BRADENTON
- 15 JOHNSON MIDDLE SCHOOL 2121 26TH AVE. E, BRADENTON
- 17 KINNAN ELEMENTARY SCHOOL 3415 TALLEVAST RD., SARASOTA
- 4 LEE MIDDLE SCHOOL 4000 53RD AVE. W, BRADENTON
- 6 MANATEE HIGH SCHOOL 1000 32ND ST. W, BRADENTON
- 5 MCNEAL ELEMENTARY SCHOOL 6325 LORRAINE RD., BRADENTON
- 26 MILLER ELEMENTARY SCHOOL 4201 MANATEE AVE., W, BRADENTON
- 20 MILLS ELEMENTARY SCHOOL 7200 69TH ST. E, PALMETTO
- 7 MYAKKA CITY ELEMENTARY SCHOOL 37205 MANATEE AVE., MYAKKA CITY
- 14 ONECO ELEMENTARY SCHOOL 5214 22ND ST. COURT E, BRADENTON
- 22 PRINE ELEMENTARY SCHOOL 3801 SOUTHERN PARKWAY, BRADENTON
- 9 RODGERS GARDEN ELEMENTARY SCHOOL 515 13TH AVE. W, BRADENTON
- 16 ROWLETT ELEMENTARY SCHOOL 3500 9TH ST. E, BRADENTON
- 1 SEABREEZE ELEMENTARY SCHOOL 3601 71ST ST. W, BRADENTON
- 8 TILLMAN ELEMENTARY SCHOOL 1415 29TH ST. E, PALMETTO
- 27 WILLIAMS ELEMENTARY SCHOOL 3404 FORT HAMER RD., PARRISH
- 23 WILLIS ELEMENTARY SCHOOL 14705 THE MASTERS AVE., BRADENTON
- 12 WITT ELEMENTARY SCHOOL 200 RYE RD., BRADENTON

PET FRIENDLY

COUNTY LEGEND

EVACUATION LEVEL

	A
	B
	C
	D
	E

= Evacuation Route

HURRICANE WIND SCALE

WIND mph

74 to 95
96 to 110
111 to 129
130 to 156
157 and over

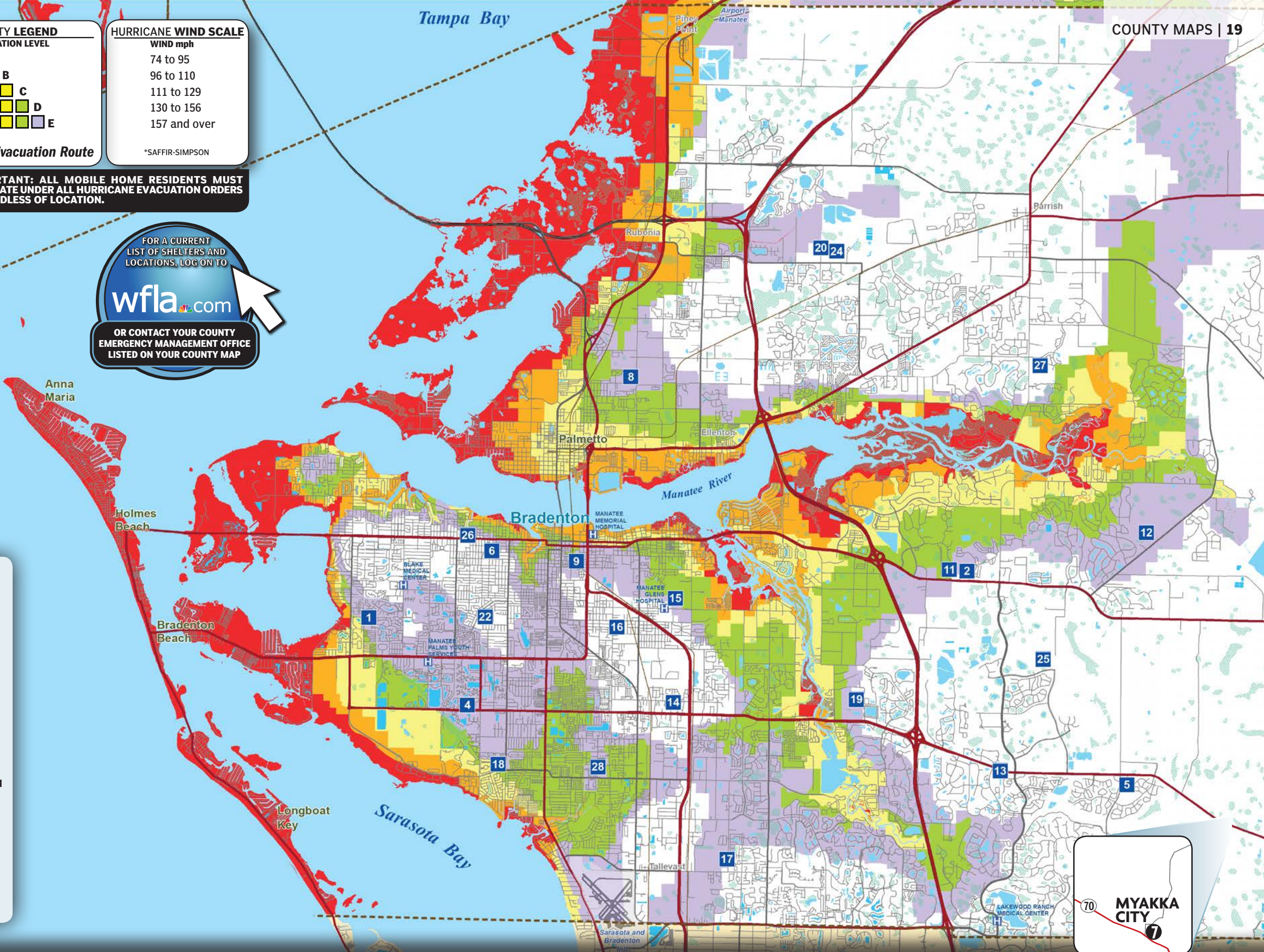
*SAFFIR-SIMPSON

IMPORTANT: ALL MOBILE HOME RESIDENTS MUST EVACUATE UNDER ALL HURRICANE EVACUATION ORDERS REGARDLESS OF LOCATION.

FOR A CURRENT LIST OF SHELTERS AND LOCATIONS, LOG ON TO

wfla.com

OR CONTACT YOUR COUNTY EMERGENCY MANAGEMENT OFFICE LISTED ON YOUR COUNTY MAP

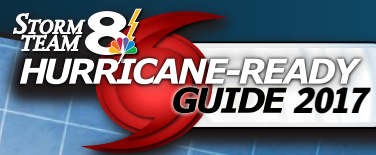


HURRICANE DEFINITION: LANDFALL

The intersection of the surface center of a hurricane with a coastline. It is possible for a cyclone's strongest winds to be over land even if landfall does not occur.

FOR MORE DETAILED INFORMATION AND INTERACTIVE MAPS LOG ON TO

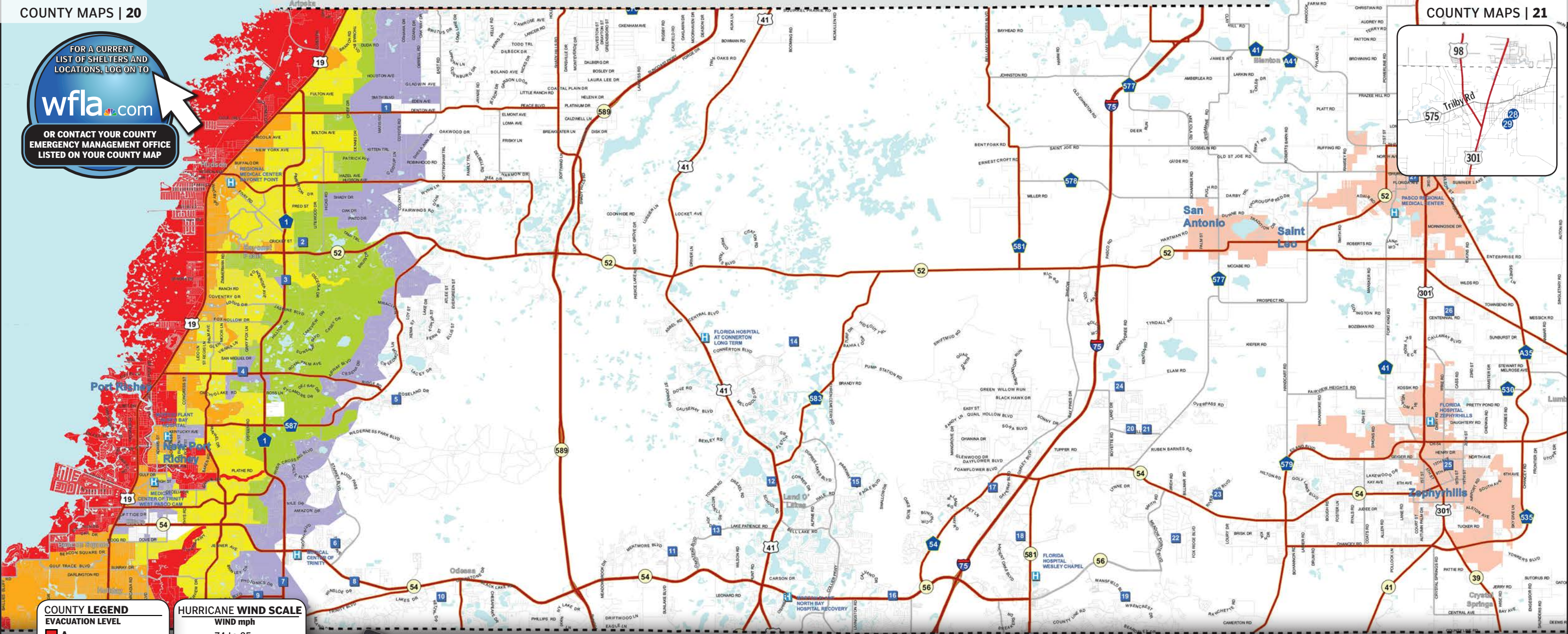
wfla.com



ACCURACY. ANYTIME. ANYWHERE.

FOR A CURRENT LIST OF SHELTERS AND LOCATIONS, LOG ON TO wfla.com

OR CONTACT YOUR COUNTY EMERGENCY MANAGEMENT OFFICE LISTED ON YOUR COUNTY MAP



COUNTY LEGEND

EVACUATION LEVEL

- A
- B
- C
- D
- E

— = Evacuation Route

HURRICANE WIND SCALE

WIND mph

- 74 to 95
- 96 to 110
- 111 to 129
- 130 to 156
- 157 and over

*SAFFIR-SIMPSON

IMPORTANT: ALL MOBILE HOME RESIDENTS MUST EVACUATE UNDER ALL HURRICANE EVACUATION ORDERS REGARDLESS OF LOCATION.



IMPORTANT PHONE NUMBERS

ANIMAL SERVICES DADE CITY	352-521-5194
ANIMAL SERVICES LAND O' LAKES	813-929-1212
ANIMAL SERVICES NEW PORT RICHEY	727-834-3216
EMERGENCY MANAGEMENT	727-847-8137
HIGHWAY PATROL	352-797-5738
DUKE ENERGY	800-228-8485
SOLID WASTE	727-847-8123
SPECIAL NEEDS SHELTER REGISTRATION	727-847-8137
TECO	888-223-0800 / 877-588-1010
WITHLACOOCHEE RIVER ELECTRIC	352-588-5115
CATHOLIC CHARITIES	727-868-9465
AMERICAN RED CROSS	352-686-9897
SALVATION ARMY	727-848-8354
UNITED WAY	727-815-8539
211 REFERRAL LINE	727-845-3030
NOAA WEATHER RADIO	2-1-1
	FIPS CODE 012101

PASCO COUNTY SHELTER INFORMATION

- **1 FASANO REGIONAL HURRICANE SHELTER** 11611 DENTON AVE., HUDSON
- **2 FIVAY HIGH SCHOOL** 12115 CHICAGO AVE., HUDSON
- **3 SCHRADER ELEMENTARY SCHOOL** 11041 LITTLE RD., NEW PORT RICHEY
- **4 CHASCO ELEMENTARY SCHOOL** 7906 RIDGE RD., PORT RICHEY
- **5 RIVER RIDGE MIDDLE HIGH SCHOOL** 11646 TOWN CENTER RD., NEW PORT RICHEY
- **6 LONGLEAF ELEMENTARY SCHOOL** 3253 TOWN AVE., NEW PORT RICHEY
- **7 JAMES W. MITCHELL HIGH SCHOOL** 2323 LITTLE RD., NEW PORT RICHEY
- **8 TRINITY ELEMENTARY SCHOOL** 2209 DUCK SLOUGH BLVD., NEW PORT RICHEY
- **9 TRINITY OAKS ELEMENTARY SCHOOL** 1827 TRINITY OAKS BLVD., NEW PORT RICHEY
- **10 ODESSA ELEMENTARY SCHOOL** 12810 INTERLAKEN RD., NEW PORT RICHEY
- **11 SUNLAKE HIGH SCHOOL** 3023 SUNLAKE BLVD., LAND O' LAKES
- **12 SANDERS MEMORIAL ES** 5126 SCHOOL RD., LAND O' LAKES
- **13 OAKSTEAD ELEMENTARY SCHOOL** 19925 LAKE PATIENCE RD., LAND O' LAKES
- **14 CONNERTON ELEMENTARY SCHOOL** 9300 FLOURISH DR., LAND O' LAKES
- **15 PINEVIEW ELEMENTARY SCHOOL** 5333 PARKWAY BLVD., LAND O' LAKES
- **16 DENHAM OAKS ELEMENTARY SCHOOL** 1422 OAK GROVE BLVD., LUTZ
- **17 VETERANS ELEMENTARY SCHOOL** 26940 PROGRESS PARKWAY, WESLEY CHAPEL
- **18 SEVEN OAKS ELEMENTARY SCHOOL** 27633 MYSTIC OAK BLVD., WESLEY CHAPEL
- **19 WIREGRASS RANCH HIGH SCHOOL** 2909 MANSFIELD BLVD., WESLEY CHAPEL
- **20 WESLEY CHAPEL HIGH SCHOOL** 30651 WELLS RD., WESLEY CHAPEL
- **21 THOMAS E WEIGHTMAN MIDDLE SCHOOL** 30649 WELLS RD., WESLEY CHAPEL
- **22 DOUBLE BRANCH ELEMENTARY SCHOOL** 31500 CHANCEY RD., WESLEY CHAPEL
- **23 NEW RIVER ELEMENTARY SCHOOL** 4710 RIVER GLEN BLVD., WESLEY CHAPEL
- **24 WATERGRASS ELEMENTARY SCHOOL** 32750 OVERPASS RD., WESLEY CHAPEL
- **25 RAYMOND B. STEWART MIDDLE SCHOOL** 38505 TENTH AVE., ZEPHYRHILLS
- **26 CENTENNIAL MIDDLE SCHOOL** 38505 CENTENNIAL RD., DADE CITY
- **27 PASCO MIDDLE SCHOOL** 13925 14TH ST., DADE CITY
- **28 LACOOCHEE ELEMENTARY SCHOOL** 38815 CUMMER RD., DADE CITY

Depending on the severity of the storm, all shelters may not be open. Before evacuating, listen to your local news for emergency information updates and to find out which shelters are open.

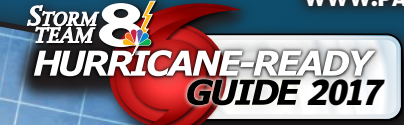
● **PET FRIENDLY**

HURRICANE DEFINITION: EYE WALL

The narrow area of intense thunderstorms that surround the eye of a hurricane. In this region, you will encounter the most ferocious portion of the storm with the highest winds it can muster.

PASCO COUNTY

WWW.PASCOCOUNTYFL.NET

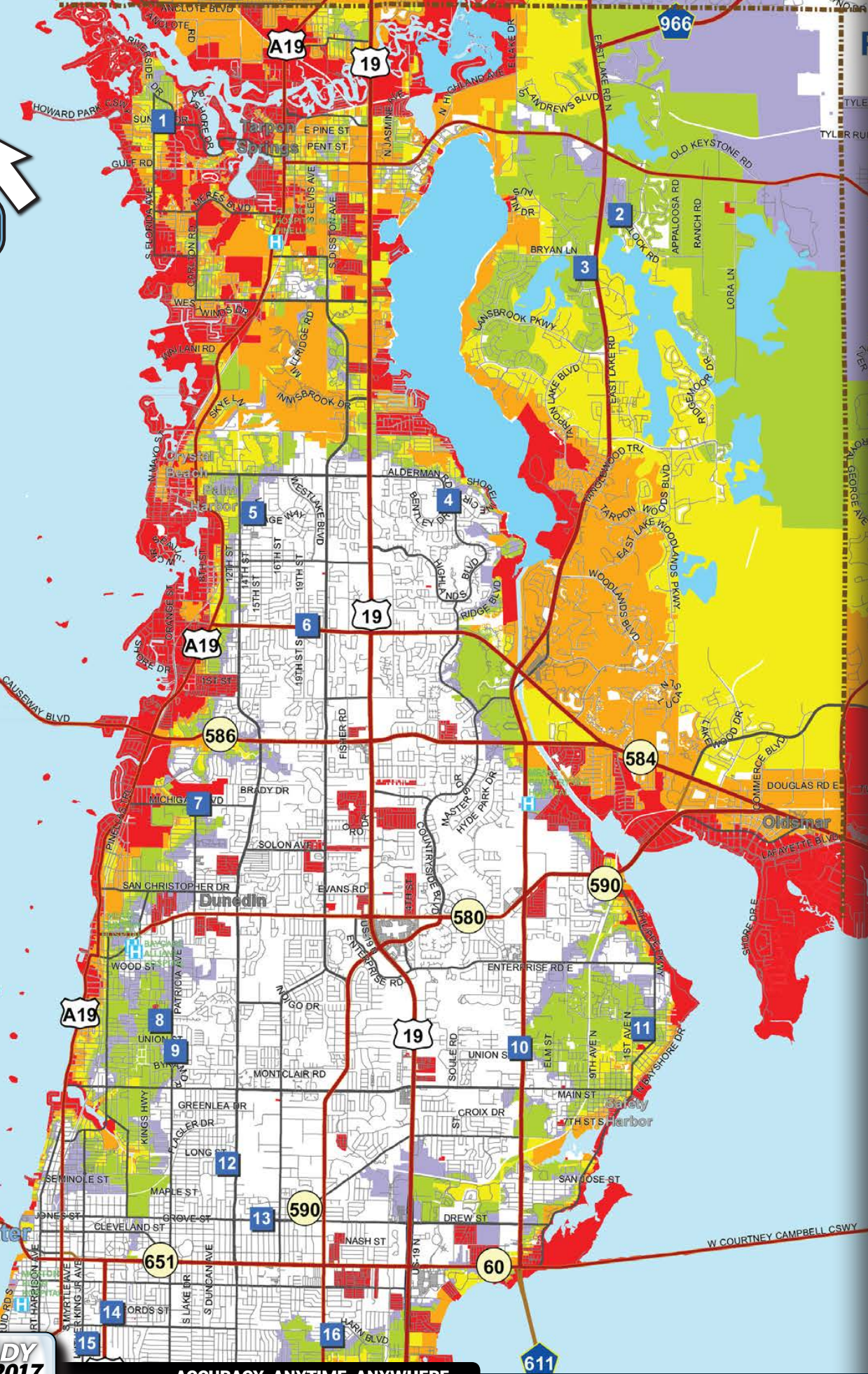


ACCURACY. ANYTIME. ANYWHERE.

FOR MORE DETAILED INFORMATION AND INTERACTIVE MAPS LOG ON TO wfla.com

FOR A CURRENT LIST OF SHELTERS AND LOCATIONS, LOG ON TO **wfla.com**

OR CONTACT YOUR COUNTY EMERGENCY MANAGEMENT OFFICE LISTED ON YOUR COUNTY MAP



NORTH PINELLAS COUNTY



WWW.PINELLASCOUNTY.ORG
WWW.PINELLASCOUNTY.ORG/EMERGENCY

COUNTY LEGEND

EVACUATION LEVEL

- A
- B
- C
- D
- E

— = Evacuation Route

HURRICANE WIND SCALE

WIND mph

- 74 to 95
- 96 to 110
- 111 to 129
- 130 to 156
- 157 and over

*SAFFIR-SIMPSON

IMPORTANT: ALL MOBILE HOME RESIDENTS MUST EVACUATE UNDER ALL HURRICANE EVACUATION ORDERS REGARDLESS OF LOCATION.

TRANSPORTATION

Register Now For Hurricane Special Needs Transport

If you're housebound or don't have transportation, don't wait until the storm is here. Register now with Pinellas County's Special Needs Program.

- Contact Pinellas County Emergency Management to find your evacuation level. Click on www.pinellascounty.org/emergency or call (727) 453-3150 (automated) or (727) 464-3800.
- If you live in a mobile home, you must leave during a mandatory evacuation.
- If you have special needs, call your local Fire Department and register. (You can find Fire Department phone numbers in the government section of the phonebook white pages.)
- You can also register by calling (727) 464-3800.
- Once registered, your local fire department will add you to a pick-up list in the event of an evacuation.
- For more information, check our website at www.pinellascounty.org/emergency or tune into our county TV station, Pinellas 18, for local coverage.

IMPORTANT WEBSITES

- EMERGENCY MANAGEMENT**
<http://www.pinellascounty.org/emergency>
- STORM PREPARATION INFORMATION**
<http://www.pinellascounty.org/emergency>
- PINELLAS COUNTY ECONOMIC DEVELOPMENT**
<http://www.pced.org>
- PINELLAS COUNTY COMMUNICATIONS**
<http://www.pinellascounty.org/communications>
- PINELLAS TV**
<http://www.pinellascounty.org/tv>

HURRICANE DEFINITION: STORM SURGE
 A storm surge is an onshore rush of water associated with a hurricane or other intense storm.

IMPORTANT PHONE NUMBERS



PINELLAS COUNTY INFORMATION	727-464-3000
PINELLAS COUNTY EMERGENCY MANAGEMENT	727-464-3800
PINELLAS COUNTY CITIZEN INFORMATION CENTER	727-464-4333
TDD	727-464-3075
FIND YOUR EVACUATION LEVEL	727-453-3150
COMMUNITY NOTIFICATION SERVICE	866-484-3264
ST. PETERSBURG-CLEARWATER AIRPORT	727-453-7800
PINELLAS COUNTY ANIMAL SERVICES	727-582-2600
PINELLAS COUNTY SHERIFF'S OFFICE	727-582-6200
PINELLAS COUNTY UTILITIES	727-464-4000
FLORIDA HIGHWAY PATROL	727-631-4020
SPECTRUM	888-289-8988
CLEARWATER GAS	727-562-4980
WOW	866-745-3685
PEOPLE'S GAS	877-832-6747
DUKE ENERGY (REPORT OUTAGES)	800-228-8485
TECO (REPORT OUTAGES)	877-588-1010
FRONTIER	800-921-8101
AMERICAN RED CROSS NORTH COUNTY	727-446-2358
AMERICAN RED CROSS SOUTH COUNTY	727-898-3111
CATHOLIC CHARITIES	727-893-1313
SALVATION ARMY NORTH COUNTY	727-725-9777
SALVATION ARMY SOUTH COUNTY	727-550-8080
UNITED WAY	813-274-0900
211 REFERRAL LINE	2-1-1

PINELLAS COUNTY SHELTER INFORMATION

NORTH COUNTY SHELTERS	
1 TARPON SPRINGS MIDDLE SCHOOL	501 N. FLORIDA AVE., TARPON SPRINGS G
2 BROOKER CREEK ELEMENTARY SCHOOL	3130 FORELOCK RD., TARPON SPRINGS G
3 EAST LAKE HIGH SCHOOL	1300 SILVER EAGLE DR., TARPON SPRINGS, G
4 CARWISE MIDDLE SCHOOL	3301 BENTLEY DR., PALM HARBOR G
5 PALM HARBOR UNIVERSITY HS	900 OMAHA ST., PALM HARBOR G
6 PALM HARBOR MIDDLE SCHOOL	1800 TAMPA RD., PALM HARBOR G
7 DUNEDIN COMMUNITY CENTER	1920 PINEHURST RD., DUNEDIN G
8 DUNEDIN HIGHLAND MIDDLE SCHOOL	70 PATRICIA AVE., DUNEDIN SPNS, PFS
9 DUNEDIN ELEMENTARY SCHOOL	900 UNION ST. N., DUNEDIN G
10 MCMULLEN BOOTH ES	3025 UNION ST., CLEARWATER G
11 SAFETY HARBOR MIDDLE SCHOOL	901 1ST AVE. N., SAFETY HARBOR G
12 CLEARWATER FUNDAMENTAL MS	1660 PALMETTO ST., CLEARWATER G
13 SKYCREST ELEMENTARY SCHOOL	10 N. CORONA AVE., CLEARWATER G
14 BELLEAIR ELEMENTARY SCHOOL	1156 LAKEVIEW RD., CLEARWATER G
15 ROSS NORTON COMMUNITY CENTER	1426 S. MARTIN LUTHER KING JR. AVE., CLEARWATER G
16 OAK GROVE MIDDLE SCHOOL	1370 S. BELCHER RD., CLEARWATER SPNS, PFS
17 LARGO HIGH SCHOOL	410 MISSOURI AVE., LARGO

Type : G - General Shelter
 Type : SPNS - Special Needs
 Type : PFS - Pet Friendly Shelter

Pet Friendly Shelters: You must pre-register for pet shelters through animal services, call (727) 582-2150. Space is limited.

Special Needs Shelters: People with special needs are encouraged to pre-register for a special needs shelter.

Please call the Department of Health at (727) 824-6900 or Pinellas County Emergency Management at (727) 464-3800.



ACCURACY. ANYTIME. ANYWHERE.

SOUTH PINELLAS COUNTY



WWW.PINELLASCOUNTY.ORG
WWW.PINELLASCOUNTY.ORG/EMERGENCY

PINELLAS COUNTY SHELTER INFORMATION

SOUTH COUNTY SHELTERS

- | | |
|----------------------------------|---|
| 18 HIGH POINT ELEMENTARY SCHOOL | 5921 150TH AVE. N., CLEARWATER G |
| 19 PINELLAS PARK HIGH SCHOOL | 6305 118TH AVE. N., LARGO G |
| 20 BAUDER ELEMENTARY SCHOOL | 12755 86TH AVE. N., SEMINOLE G |
| 21 JOHN SEXTON ELEMENTARY SCHOOL | 1997 54TH AVE. N., ST. PETERSBURG G |
| 22 LEALMAN INTERMEDIATE SCHOOL | 4900 28TH ST. N., ST. PETERSBURG G |
| 23 NEW HEIGHTS ELEMENTARY SCHOOL | 3901 37TH ST. N., ST. PETERSBURG G |
| 24 ST. PETERSBURG HIGH SCHOOL | 2501 5TH AVE. N., ST. PETERSBURG G |
| 25 FAIRMOUNT PARK ES | 575 41ST ST. S., ST. PETERSBURG G |
| 26 BOCA CIEGA HIGH SCHOOL | 924 58TH ST. S., GULFPORT G |
| 27 GIBBS HIGH SCHOOL | 850 34TH ST. S., ST. PETERSBURG G |
| 28 JOHN HOPKINS MIDDLE SCHOOL | 701 16TH ST. S., ST. PETERSBURG SPNS |
| 29 CAMPBELL PARK ES | 1051 7TH AVE. S., ST. PETERSBURG G |
| 30 JAMERSON ELEMENTARY SCHOOL | 1200 37TH ST. S., ST. PETERSBURG G |
| 31 ST PETERSBURG COLLEGE MC | 1300 22ND ST. S., ST. PETERSBURG G |
| 32 GULFPORT ELEMENTARY SCHOOL | 2014 52ND ST. S., GULFPORT G |
| 33 THURGOOD MARSHALL MS | 3901 22ND AVE. S., ST. PETERSBURG G Z Z |
| 34 JAMES SANDERLIN ES | 2350 22ND AVE. S., ST. PETERSBURG G |

Type : G - General Shelter
Type : SPNS - Special Needs
Type : PFS - Pet Friendly Shelter

Pet Friendly Shelters: You must pre-register for pet shelters through animal services, call (727) 582-2150. Space is limited.

Special Needs Shelters: People with special needs are encouraged to pre-register for a special needs shelter.

Please call the Department of Health at (727) 824-6900 or Pinellas County Emergency Management at (727) 464-3800.



IMPORTANT PHONE NUMBERS

- | | |
|---|--------------|
| PINELLAS COUNTY INFORMATION | 727-464-3000 |
| PINELLAS COUNTY EMERGENCY MANAGEMENT | 727-464-3800 |
| PINELLAS COUNTY CITIZEN INFORMATION CENTER | 727-464-4333 |
| TDD | 727-464-3075 |
| FIND YOUR EVACUATION LEVEL | 727-453-3150 |
| COMMUNITY NOTIFICATION SERVICE | 866-484-3264 |
| ST. PETERSBURG-CLEARWATER AIRPORT | 727-453-7800 |
| PINELLAS COUNTY ANIMAL SERVICES | 727-582-2600 |
| PINELLAS COUNTY SHERIFF'S OFFICE | 727-582-6200 |
| PINELLAS COUNTY UTILITIES | 727-464-4000 |
| FLORIDA HIGHWAY PATROL | 727-631-4020 |
| SPECTRUM | 888-289-8988 |
| CLEARWATER GAS | 727-562-4980 |
| WOW | 866-745-3685 |
| DUKE'S GAS | 877-832-6747 |
| DUKE ENERGY (REPORT OUTAGES) | 800-228-8485 |
| TECO (REPORT OUTAGES) | 877-588-1010 |
| FRONTIER | 800-921-8101 |
| AMERICAN RED CROSS NORTH COUNTY | 727-446-2358 |
| AMERICAN RED CROSS SOUTH COUNTY | 727-898-3111 |
| CATHOLIC CHARITIES | 727-893-1313 |
| SALVATION ARMY NORTH COUNTY | 727-725-9777 |
| SALVATION ARMY SOUTH COUNTY | 727-550-8080 |
| UNITED WAY | 813-274-0900 |
| 211 REFERRAL LINE | 2-1-1Z |

COUNTY LEGEND

EVACUATION LEVEL

- A
- B
- C
- D
- E

— = Evacuation Route

HURRICANE WIND SCALE

WIND mph

- 74 to 95
- 96 to 110
- 111 to 129
- 130 to 156
- 157 and over

*SAFFIR-SIMPSON

IMPORTANT: ALL MOBILE HOME RESIDENTS MUST EVACUATE UNDER ALL HURRICANE EVACUATION ORDERS REGARDLESS OF LOCATION.

FOR A CURRENT LIST OF SHELTERS AND LOCATIONS, LOG ON TO

wfla.com

OR CONTACT YOUR COUNTY EMERGENCY MANAGEMENT OFFICE LISTED ON YOUR COUNTY MAP

HURRICANE DEFINITION: OUTFLOW

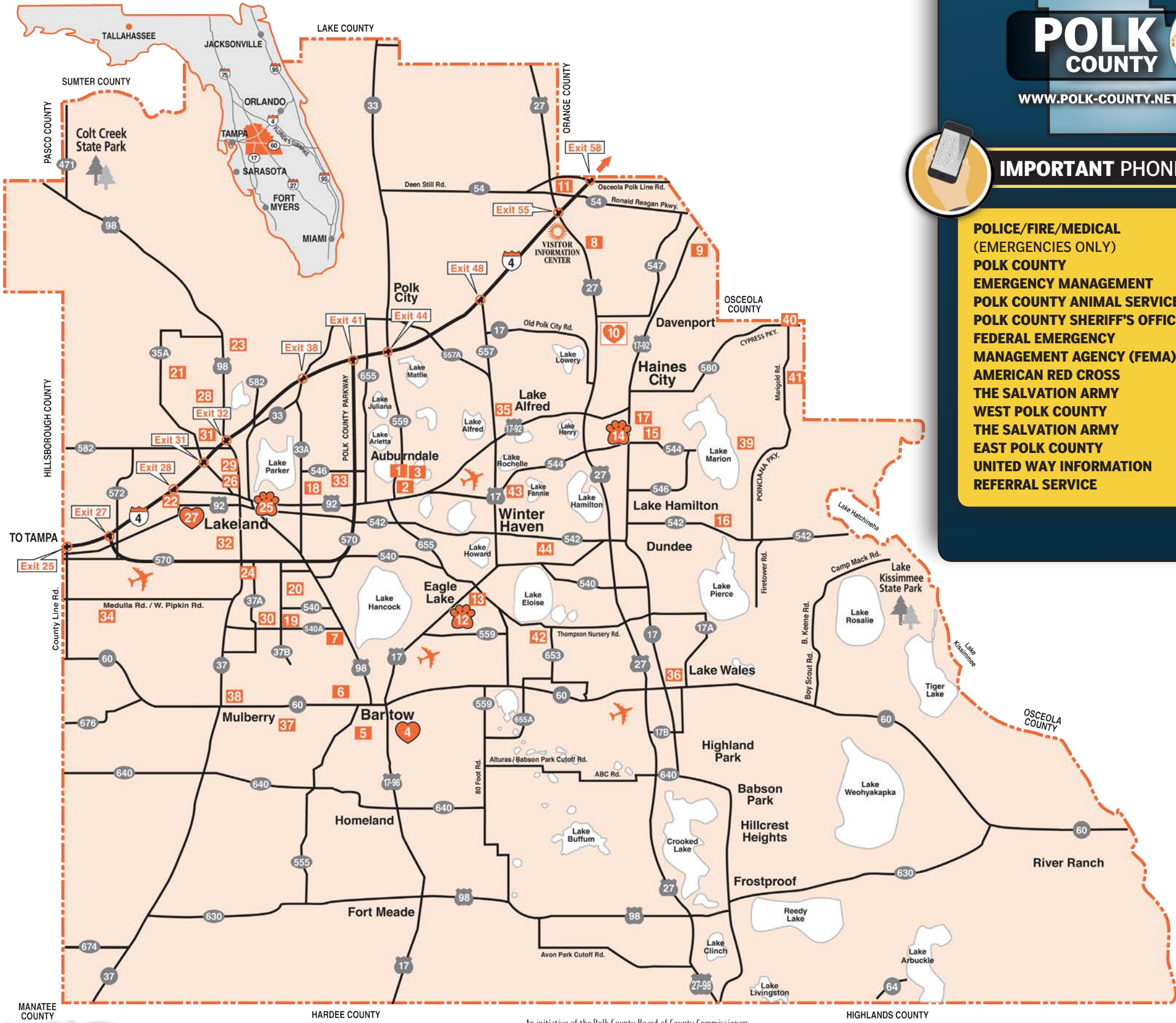
The outer fringe of a hurricane that serves as a very important element in hurricane development. The outflow represents all the energy being released by the hurricane.

FOR MORE DETAILED INFORMATION AND INTERACTIVE MAPS LOG ON TO

wfla.com



ACCURACY. ANYTIME. ANYWHERE.



POLK COUNTY



WWW.POLK-COUNTY.NET/EM

IMPORTANT PHONE NUMBERS

POLICE/FIRE/MEDICAL (EMERGENCIES ONLY)	9-1-1
POLK COUNTY	863-519-7350
EMERGENCY MANAGEMENT	
POLK COUNTY ANIMAL SERVICES	863-499-2600
POLK COUNTY SHERIFF'S OFFICE	863-298-6200
FEDERAL EMERGENCY MANAGEMENT AGENCY (FEMA)	800-621-FEMA
AMERICAN RED CROSS	863-294-5941
THE SALVATION ARMY	863-682-8179
WEST POLK COUNTY	
THE SALVATION ARMY	863-291-5107
EAST POLK COUNTY	
UNITED WAY INFORMATION REFERRAL SERVICE	863-648-1515

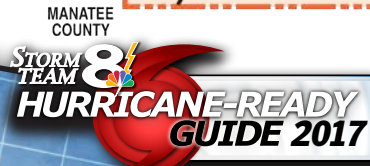
POLK COUNTY SHELTERS

1 AUBURDALE HIGH SCHOOL	1 BLOODHOUND TRAIL, AUBURDALE
2 CALDWELL ELEMENTARY SCHOOL	141 DAIRY RD., AUBURDALE
3 STAMBAUGH MIDDLE SCHOOL BARTOW	226 N. MAIN ST., AUBURDALE
4 PCHD SPECIALTY	1255 BRICE BLVD., BARTOW
5 BARTOW HIGH SCHOOL	1270 S. BROADWAY AVE., BARTOW
6 STEPHENS ELEMENTARY SCHOOL	1350 N. MAPLE AVE., BARTOW
7 SPESSARD L. HOLLAND ELEMENTARY	2342 E.F. GRIFFIN RD., BARTOW
DAVENPORT	
8 HORIZONS ELEMENTARY SCHOOL	1700 FOREST LAKE DR., DAVENPORT
9 LOUGHMAN OAKS ELEMENTARY SCHOOL	4600 US HWY. 17-92 N., DAVENPORT
10 RIDGE COMMUNITY HIGH SCHOOL	500 ORCHID DR., DAVENPORT
11 RIDGEVIEW GLOBAL STUDIES ACADEMY	1000 DUNSON RD., DAVENPORT
EAGLE LAKE	
12 LAKE REGION HIGH SCHOOL	1995 THUNDER RD., EAGLE LAKE
13 PINWOOD ES HAINES CITY	1400 GILBERT ST., EAGLE LAKE
14 ALTA VISTA ELEMENTARY SCHOOL	801 SCENIC HWY., HAINES CITY
15 HAINES CITY HIGH SCHOOL	2800 HORNET DR., HAINES CITY
16 SANDHILL ES LAKELAND	1801 TYNER RD., HAINES CITY
17 BOONE MIDDLE SCHOOL	225 S. 22ND ST., HAINES CITY
18 COMBEE ELEMENTARY SCHOOL	2805 MORGAN COMBEE RD., LAKELAND
19 GEORGE JENKINS HIGH SCHOOL	6000 LAKELAND HIGHLANDS RD., LAKELAND
20 HIGHLANDS GROVE ELEMENTARY SCHOOL	4510 LAKELAND HIGHLANDS RD., LAKELAND
21 KATHLEEN ELEMENTARY SCHOOL	3515 SHERETZ RD., LAKELAND
22 KATHLEEN HIGH SCHOOL	1 RED DEVIL WAY, LAKELAND
23 LAKE GIBSON HIGH SCHOOL	7007 N. SOCRUM LOOP RD., LAKELAND
24 LAKELAND HIGHLANDS MIDDLE SCHOOL	740 LAKE MIRIAM DR., LAKELAND
25 PHILIP O'BRIEN ELEMENTARY SCHOOL	1225 E. LIME ST., LAKELAND
(FORMERLY LIME STREET ELEMENTARY)	
26 LINCOLN AVENUE ACADEMY	1330 N. LINCOLN AVE., LAKELAND
27 MCKEEL ACADEMY	1810 W. PARKER ST., LAKELAND
28 DR. N.E. ROBERTS ELEMENTARY SCHOOL	6600 GREEN RD., LAKELAND
29 ROCHELLE SCHOOL OF THE ARTS	1501 MLK JR. AVE., LAKELAND
30 SCOTT LAKE ELEMENTARY SCHOOL	1140 E. CR 540A, LAKELAND
31 SLEEPY HILL ELEMENTARY SCHOOL	2285 SLEEPY HILL RD., LAKELAND
32 SOUTHWEST ELEMENTARY SCHOOL	2650 SOUTHWEST AVE., LAKELAND
33 TENOROC HIGH SCHOOL	4905 SADDLE CREEK ROAD, LAKELAND
34 R. BRUCE WAGNER ES LAKE ALFRED	5500 YATES RD., LAKELAND
35 KAREN M. SIEGEL ACADEMY LAKE WALES	935 N. BUENA VISTA DR., LAKE ALFRED
36 SPOOK HILL ES MULBERRY	321 DR. J.A. WILTSHIRE AVE. E., LAKE WALES
37 MULBERRY MIDDLE SCHOOL	500 MLK AVE., MULBERRY
38 PURCELL ES POINCIANA	305 N.E. FIRST AVE., MULBERRY
39 LAKE MARION CREEK SCHOOL	3055 LAKE MARION CREEK RD., POINCIANA
40 LAUREL ELEMENTARY SCHOOL	1851 LAUREL AVE., POINCIANA
41 PALMETTO ES WINTER HAVEN	315 PALMETTO ST., POINCIANA
42 CHAIN OF LAKES ES	7001 CR 653, WINTER HAVEN
43 JEWETT SCHOOL OF THE ARTS	2250 8TH ST. N.E., WINTER HAVEN
44 WINTER HAVEN HS	600 6TH ST. S.E., WINTER HAVEN

FOR A CURRENT LIST OF SHELTERS AND LOCATIONS, LOG ON TO

wfla.com

OR CONTACT YOUR COUNTY EMERGENCY MANAGEMENT OFFICE LISTED ON YOUR COUNTY MAP



ACCURACY. ANYTIME. ANYWHERE.

HURRICANE DEFINITION: STORM TIDE
The actual level of sea water resulting from the astronomic tide combined with the storm surge.

FOR MORE DETAILED INFORMATION AND INTERACTIVE MAPS LOG ON TO **wfla.com**

An initiative of the Polk County Board of County Commissioners

SARASOTA COUNTY

WWW.SCGOV.NET



IMPORTANT PHONE NUMBERS

SARASOTA COUNTY CALL CENTER	941-861-5000
EVACUATION INFORMATION	941-861-5000
TTY DEAF COMMUNICATIONS	941-861-1833
SPECIAL NEEDS REGISTRY	941-861-5000
AMERICAN RED CROSS SW FLORIDA CHAPTER	941-379-9300
SUNCOAST COMMUNITIES BLOOD BANKS	866-97-BLOOD
CATHOLIC CHARITIES	941-355-4680
VOLUNTEER COMMUNITY CONNECTIONS	941-953-5965
SALVATION ARMY	941-954-4673
UNITED WAY	941-366-2686
211 REFERRAL LINE	2-1-1
ANIMAL SERVICES	941-861-9500
FLORIDA POWER AND LIGHT	800-468-8243
HIGHWAY PATROL	941-492-5850
SHERIFF	941-861-5800
SOLID WASTE	941-861-5000

SARASOTA COUNTY SHELTER INFORMATION

1 BOOKER MIDDLE SCHOOL	2250 MYRTLE ST.
2 TUTTLE ELEMENTARY SCHOOL	2863 8TH ST.
3 BISHOP NEVINS ACADEMY	5380 FRUITVILLE RD.
4 SARASOTA HIGH SCHOOL	1000 S SCHOOL AVE.
5 BROOKSIDE MIDDLE SCHOOL ●	3636 S SHADE AVE.
6 SOUTHSIDE ELEMENTARY SCHOOL	1901 WEBBER ST
7 BRENTWOOD ELEMENTARY SCHOOL	2500 VINSON AVE.
8 RIVERVIEW HIGH SCHOOL ●	1 RAM WAY
9 BOOKER HIGH SCHOOL	3201 N ORANGE AVE.
22 PHILLIPPI SHORES ELEMENTARY SCHOOL	4747 S TAMIAHI TRAIL
24 ASHTON ELEMENTARY SCHOOL	5110 ASHTON RD.
25 GULF GATE ELEMENTARY SCHOOL	6500 S LOCKWOOD RIDGE RD.
30 VENICE COMMUNITY CENTER	326 S NOKOMIS AVE.
32 GLENALLEN ELEMENTARY SCHOOL	7050 GLENALLEN BLVD.
33 NORTH PORT HIGH SCHOOL ●	6400 W PRICE BLVD.
34 HERON CREEK MIDDLE SCHOOL ●	6501 W PRICE BLVD.
35 TOLEDO BLADE ELEMENTARY SCHOOL	1201 GERANIUM AVE.
36 WOODLAND MIDDLE SCHOOL ●	2700 PANACEA BLVD.
37 TAYLOR RANCH ELEMENTARY SCHOOL	2500 TAYLOR RANCH RD.
38 ATWATER ELEMENTARY SCHOOL	4701 HUTSVILLE AVE.

● PET FRIENDLY



ACCURACY. ANYTIME. ANYWHERE.

EMERGENCY UPDATES

SHELTER OPENINGS WILL DIFFER BY SIZE AND INTENSITY OF A DISASTER. DO NOT GO TO A SHELTER UNTIL LOCAL OFFICIALS ANNOUNCE IN THE MEDIA THAT THE SHELTER IS OPEN. MORE INFORMATION IS AVAILABLE ONLINE AT THE COUNTY WEB SITE, WWW.SCGOV.NET.

Prepare now to prevent storm debris by trimming trees and cleaning up your property. If a storm causes damage to your property, contact the Sarasota County call center at 941-861-5000 for instructions on how to prepare storm-related debris for removal. If debris is not properly prepared, the property owner/resident is responsible for debris disposal and its expense.

Separate storm debris into the following categories:

- garbage: place spoiled food in containers, or double bag it for pick-up
- household goods: furniture, clothes, books, toys, and carpet
- vegetative: tree limbs and trunks
- construction materials: drywall, roof shingles, aluminum
- appliances: refrigerators, water heaters, televisions and computers

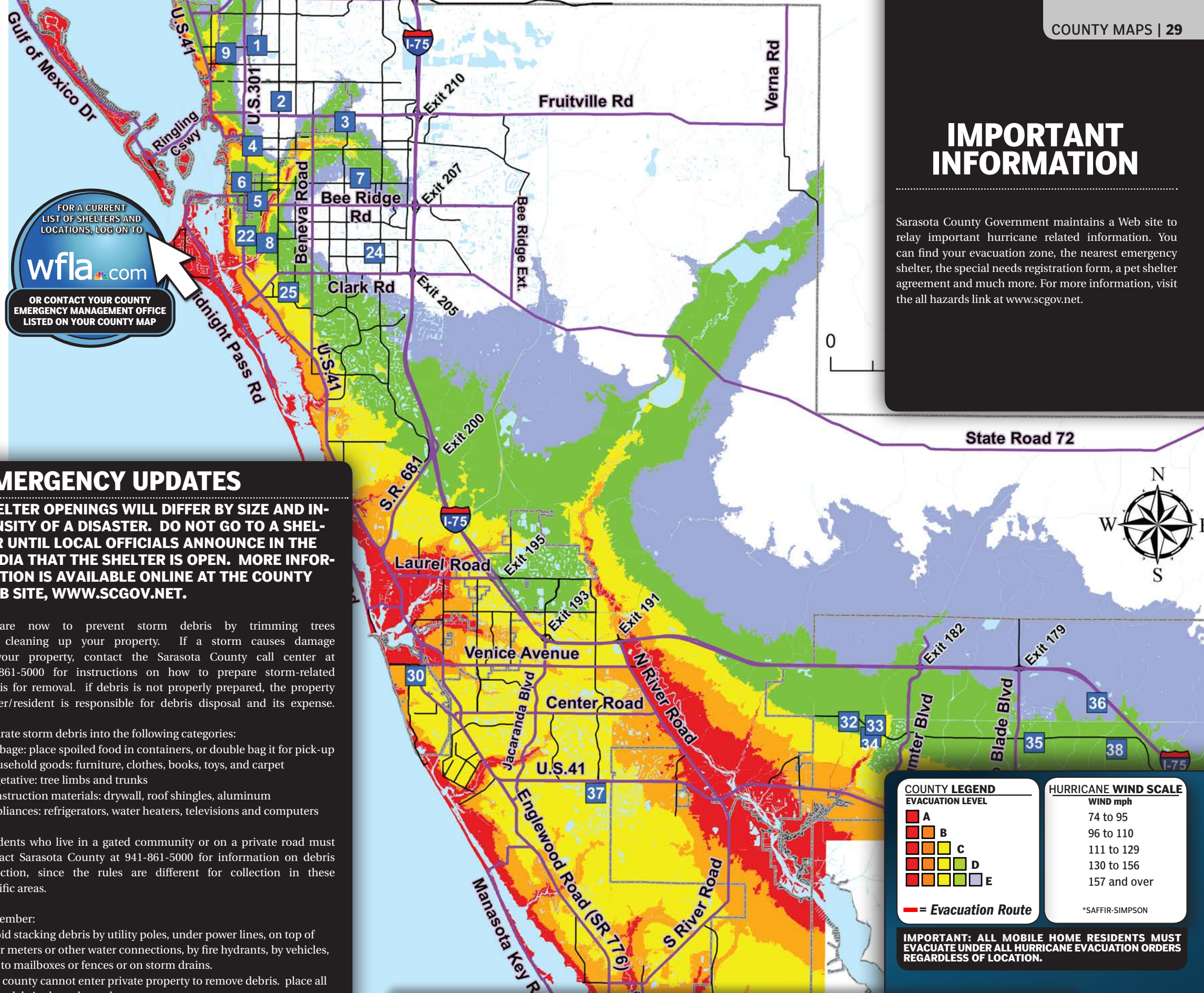
Residents who live in a gated community or on a private road must contact Sarasota County at 941-861-5000 for information on debris collection, since the rules are different for collection in these specific areas.

Remember:

- avoid stacking debris by utility poles, under power lines, on top of water meters or other water connections, by fire hydrants, by vehicles, next to mailboxes or fences or on storm drains.
- the county cannot enter private property to remove debris. place all storm debris along the curb.
- do not place storm debris in the street.

FOR A CURRENT LIST OF SHELTERS AND LOCATIONS, LOG ON TO **wfla.com**

OR CONTACT YOUR COUNTY EMERGENCY MANAGEMENT OFFICE LISTED ON YOUR COUNTY MAP



IMPORTANT INFORMATION

Sarasota County Government maintains a Web site to relay important hurricane related information. You can find your evacuation zone, the nearest emergency shelter, the special needs registration form, a pet shelter agreement and much more. For more information, visit the all hazards link at www.scgov.net.

COUNTY LEGEND	HURRICANE WIND SCALE
EVACUATION LEVEL	WIND mph
■ A	74 to 95
■ B	96 to 110
■ C	111 to 129
■ D	130 to 156
■ E	157 and over
— = Evacuation Route	*SAFFIR-SIMPSON

IMPORTANT: ALL MOBILE HOME RESIDENTS MUST EVACUATE UNDER ALL HURRICANE EVACUATION ORDERS REGARDLESS OF LOCATION.

HURRICANE DEFINITION: SPIRAL RAINBANDS

Bands of heavy convective showers that spiral inward toward the storm's center.

FOR MORE DETAILED INFORMATION AND INTERACTIVE MAPS LOG ON TO

wfla.com